

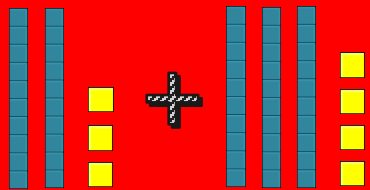
Group A

CPA APPROACH

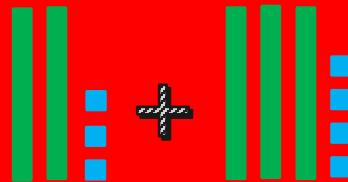
Addition 2 digit numbers by
2 digit numbers

$$23 + 34$$

CONCRETE



PICTORIAL



ABSTRACT

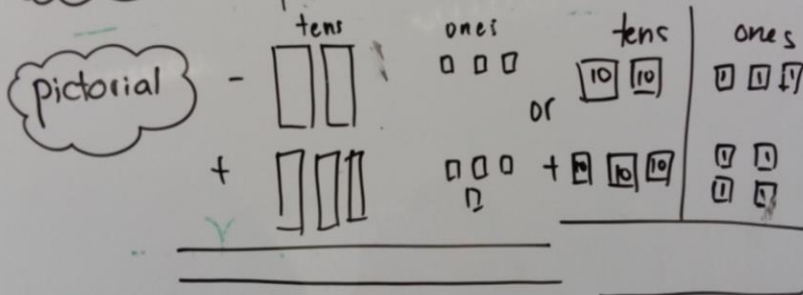
$$\begin{array}{r} \text{T} \quad \text{O} \\ 23 \\ + 34 \\ \hline \end{array}$$

Group A - Addition: 2 digit by 2 digit.

Objective: adding 2 digit by 2 digit
without regrouping using concrete
materials, place value chart, column method.

For example $23 + 34$

Concrete - using base ten blocks +
place value chart



Abstract

	tens	ones
	2	3
+	3	4
<hr/>		
<hr/>		

Concrete Representation

1. Recalling base ten blocks.

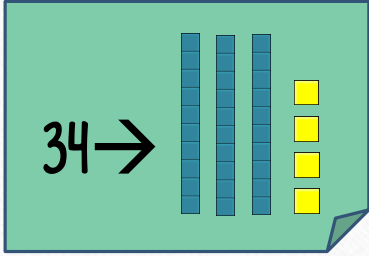
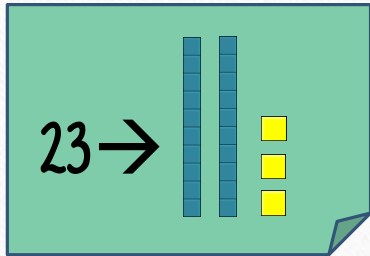


→ Ten

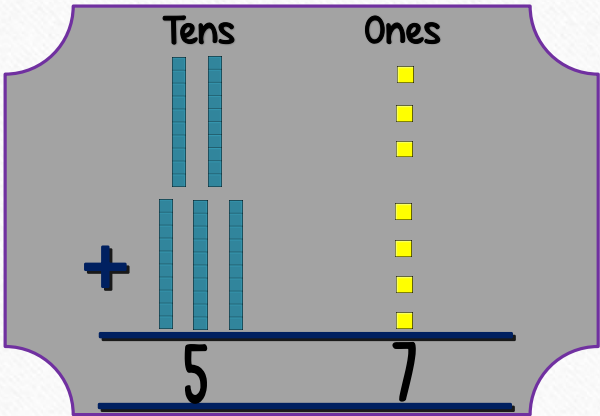


→ One

2. Show numbers by using base ten blocks.



3. Put the base ten blocks in the correct column.



4. Add the numbers [add the ones first followed by the tens].

Pictorial Representation

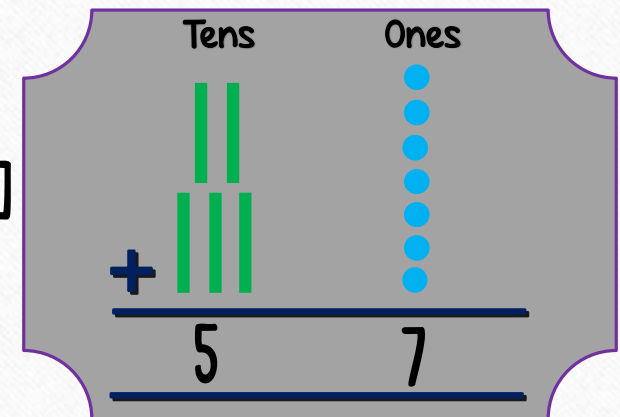
1. By drawing rectangle and square to represent base ten blocks .  → Ten  → One

2. Draw shapes to represent the number .



3. Draw the shapes in the correct column.

[Lines and dots can also be use to represent the tens and ones.]



4. Add the numbers [add the ones first followed by the tens].

Abstract Representation

1. Recalling place value.

Tens	Ones
------	------

2. Put the numbers in the correct column.

Tens	Ones
2	3
+ 3	4
<hr/>	

3. Add the numbers [add the ones first followed by the tens].

Tens	Ones
2	3
+ 3	4
<hr/>	
5	7